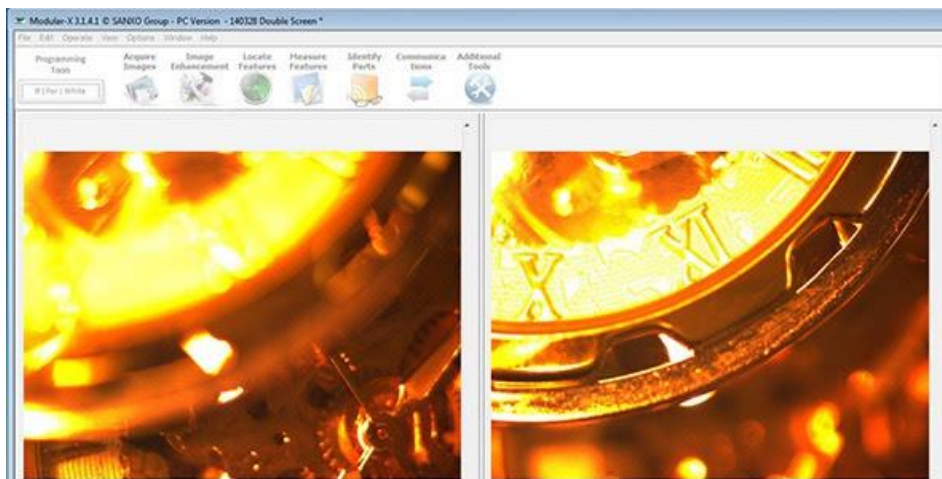


Press release

Modular-X machine vision software supports Optotune tunable lens

Budapest/Zurich, May 23, 2014 – Optotune’s focus tunable lens EL-10-30-Ci has been successfully integrated into SANXO Group’s image processing software **Modular-X**. With rapid changes in focal length of the tunable lens, pictures at different working distances are acquired, displayed and processed in real time by the software. Featuring both preset focus distances and auto-focus, Modular-X enables a variety of applications in the field of machine vision, e.g. fast imaging and processing of barcodes at different working distances.



Oscillating lens extends depth of field in real time

A particularly interesting application, which was presented by Optotune at the recent AIA Vision show in Boston, is the combination of two images at different working distances into one live video stream. To achieve that the software synchronizes the camera with alternating focal power settings of the tunable lens. Edge detection algorithms then help combining the alternating images into one live video stream.



Digital microscope with variable focus

The Optotune tunable lens is also successfully integrated into another main product, the **SANXO-Scope HD** digital microscope. The digital microscope brought into the market by SANXO offers a complete setup for magnified high frame rate live image inspection. The emphasis in development was put to open space above the working surface allowing the object under inspection to be both easily moved around and manually manipulated with tools in an ergonomic working position. Adjustability, customizability and expandability were also considered granting the possibility to fit the setup for many uses. After superfast calibration with a mouse click, the SANXO-Scope HD system can be utilized for measuring distances in the magnified image.



The applications are available at SANXO Group. For further information please write to info@sanxo.eu.

About Modular-X

The Modular-X software is a versatile industrial image processing software, providing effective solution for the optical Quality Control of your products. The well-structured menu system, the wide range of tools and the looping statements of Modular-X all help the user to create an effective and rapid application. With this software even a complex problem can easily be solved. Modular-X uses the LabVIEW Vision Development Module functions of National Instruments. In case there is a need for customized solution, the open interface of Modular-X gives the opportunity to run custom LabVIEW Vis, by which the user can develop individual method for processing the measurement data and they can implement more complex procedures. The program supports parallel image processing, so several cameras can be present in the optical measurement system at the same time and there are various ways of their synchronization. Modular-X supports the communication standards that are most frequently used in industrial applications.

About Optotune

Optotune®, Inc, develops and manufactures adaptive optical components based on elastic polymers. Optotune's focus-tunable lenses and laser speckle reducers offer new solutions for several industries including mobile phone cameras, machine vision, laser processing, professional lighting and laser projection. www.optotune.com

About SANXO-Systems

SANXO-Innovation Oy is a growing technological company providing wide variety of Software and Hardware solutions of machine vision and automation. The company was established in 2002. In 2007 the daughter company SANXO-Systems Ltd. was established in Budapest, Hungary. In 2012 the second office was opened in Hungary in Miskolc.

Media contact:

Mark Blum, Vice President Sales & Marketing
Email: mark.blum@optotune.com
Phone: +41 58 856 3013
Mobile: +41 79 782 0241