

# Lens Driver Firmware Flash Utility

## Prerequisites

### Java Runtime Environment (JRE)

Open **Programs and Features** in Windows control panel and make sure the latest version of JRE is installed (it will for example be listed as **Java X Update XX** where X will be a number). You can get the newest JRE from <https://www.java.com/en/download>

### Microsoft .Net Framework

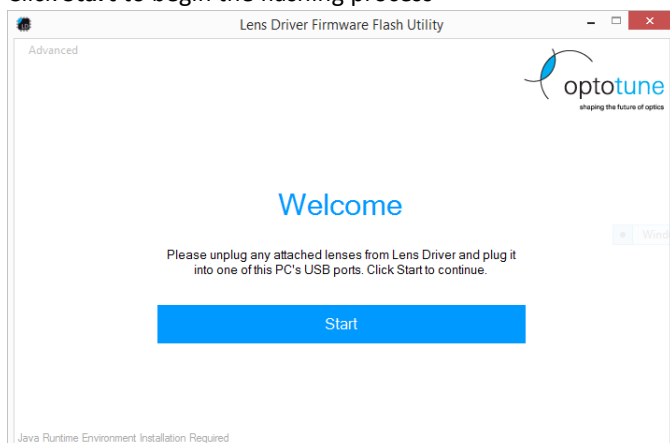
Microsoft .net framework is required for the application. The setup which you use to install this application will take care of this installation if the software should not already be present on your system.

## Installation

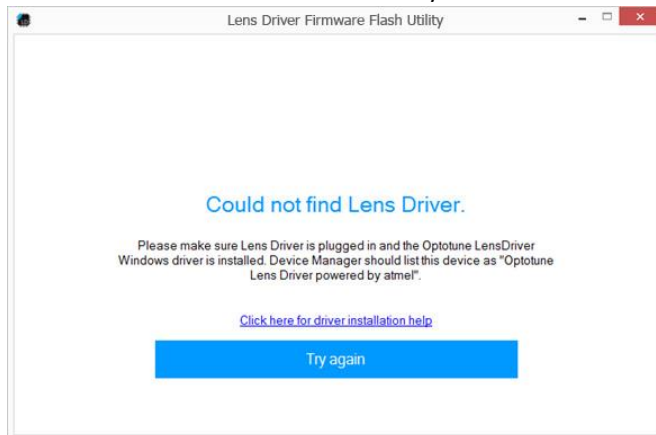
- Uninstall all old versions from **Lens Driver Firmware Flash Utility** (or the old **Lens Driver Firmware Upgrade Utility**) from Windows Control Panel
- Double click on **setup.exe** and follow the installation wizard.

## Usage

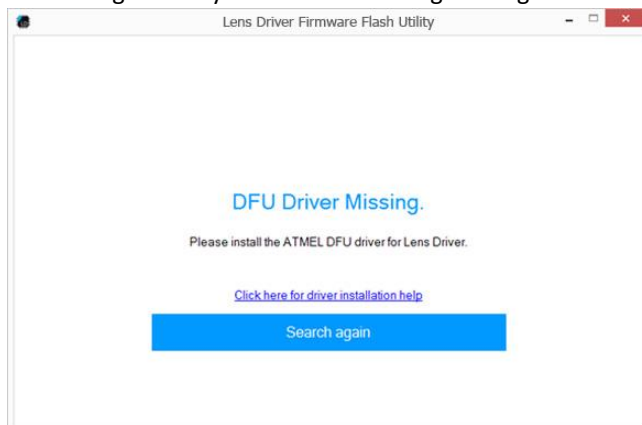
- Launch the application from the start menu (Shortcut can be found in Start → Optotune AG → Lens Driver Firmware Flash Utility)
  - Confirm with **Yes** when you see a **User Account Control** window asking you if you want to allow this application to make changes to your computer.
- You won't be able to continue if Java Runtime Environment is not installed. Please refer to chapter **Prerequisites** for instructions where to download Java Runtime Environment.
- Plug in the Lens Driver you wish to flash into the USB port of your computer (Important: Make sure that no lens is connected to Lens Driver)
- Click **Start** to begin the flashing process



- If you connect the Lens Driver for the first time to your computer, you have to install the Optotune Lens Driver Windows driver first. Then you should see the following message:

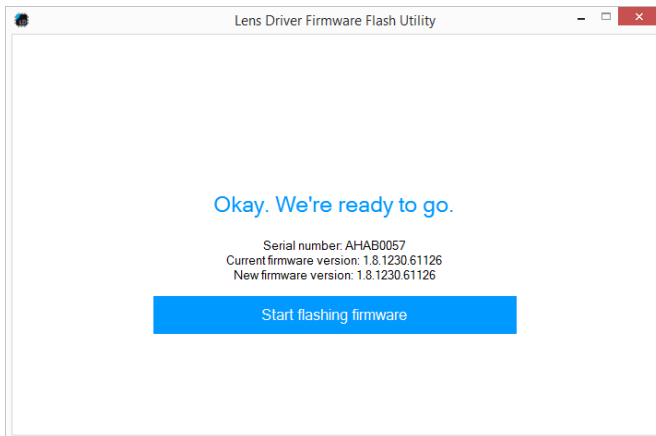


- Click on **Click here for driver installation help** and follow the instructions on screen to install the "Optotune Lens Driver" Windows driver. More details are described in the **FAQ section** at the end of this document (copied from the Lens Driver manual). If this is done, you can continue the wizard by clicking **Try again**.
- The application will first set your Lens Driver into DFU mode which is required to upload a new firmware.
- If you flash a Lens Driver firmware for the first time, you have to install the Atmel DFU Windows driver at this stage. Then you see the following message:

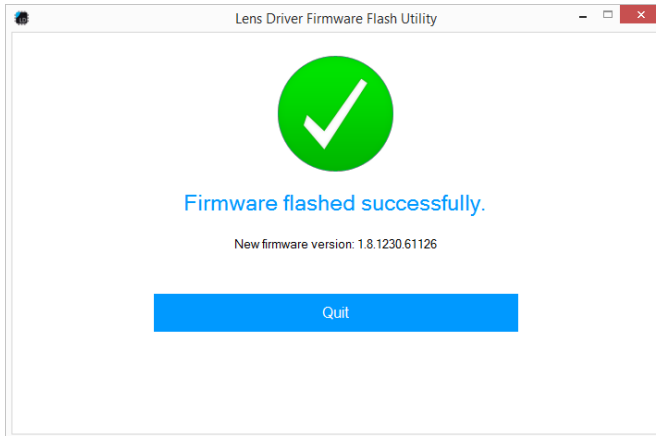


- Click on **Click here for driver installation help** and follow the instructions on screen to install the DFU driver. If this is done, you continue the wizard by clicking **Search again**.
- Click **Start flashing firmware** to upload the new Lens Driver firmware. In order to select a different firmware version, hold Shift + click on **Start flashing firmware**. A window opens where you can select

a custom firmware hex-file.



- After the firmware has been flashed successfully you will see the following message



## FAQ Section

### Installation of the Optotune Lens Driver Windows driver in Windows XP and Windows 7

- **IMPORTANT:** Please disconnect any lenses from the Lens Driver hardware!
- Connect Lens Driver to a free USB port on your PC.
- Windows will now try to install a driver. This process won't succeed because of a missing driver software. This can be ignored.
- Open Windows **Device Manager**
- In **Device Manager** navigate to the category **Other devices**, right click on the device **Optotune LD** and select **Update Driver Software....**
- Select **Browse my computer for driver software**.
- Click on **Browse** and navigate to the installation directory of this application (see below for installation directory). Confirm the folder choice by clicking **OK**.
- Make sure **Include subfolders** is checked and click **Next**.
- Click **Next** in the **Update Driver Software** window.
- Click **Install this driver software anyway** if you see a publisher verification security warning.
- The installation proceeds and installs the Windows driver.
- The Windows driver is successfully installed if you see a **Optotune Lens Driver powered by atmel** in the section **Ports (COM & LTP)** within the **Device Manager**.
- Your Lens Driver is ready to go.

### Installation of the Optotune Lens Driver Windows driver in Windows 8.1

- Installation of the Windows driver in Windows 8.1 requires disabling the driver signature enforcement first. The following steps explain this procedure.
- Press the **Win + C** keyboard combination to bring up the charms bar, then click on the **Settings** charm.
- Click on **Change PC settings**.
- In Control Panel, click on **Update and recovery**.
- Now click on **Recovery**.
- On the right hand side in the **Advanced Startup** section click on **Restart now**.
- Once your computer has rebooted click on **Troubleshoot**.
- Now click on **Advanced Options**, then **Startup Settings** and finally **Restart**.
- Your computer will now restart again and show you a list of options. Select option **7) Disable driver signature enforcement** by pressing **F7** on your keyboard.
- Your computer will now restart with driver signature enforcement disabled and you may continue with the normal driver installation procedure. In order to do so, start Lens Driver Controller.
- **IMPORTANT:** Please disconnect any lenses from the Lens Driver hardware!
- Connect Lens Driver to a free USB port on your PC.
- Windows will now try to install a driver. This process won't succeed because of a missing driver software. This can be ignored.
- Open Windows **Device Manager**
- In **Device Manager** navigate to the category **Other devices**, right click on the device **Optotune LD** and select **Update Driver Software...**
- Select **Browse my computer for driver software**.
- Click on **Browse** and navigate to the installation directory of this application (see below for installation directory). Confirm the folder choice by clicking **OK**.
- Make sure **Include subfolders** is checked and click **Next**.
- Click **Next** in the **Update Driver Software** window.
- Click **Install this driver software anyway** if you see a publisher verification security warning.
- The installation proceeds and installs the Windows driver.
- The Windows driver is successfully installed if you see a **Optotune Lens Driver powered by atmel** in the section **Ports (COM & LTP)** within the **Device Manager**.
- Your Lens Driver is ready to go.